



**TEXTILE**  
TRIMMINGS

Shaughnessy  
Collection





SHAUGHNESSY COLLECTION



# Shaughnessy Collection

## FINIALS FOR 1" DIAMETER RODS

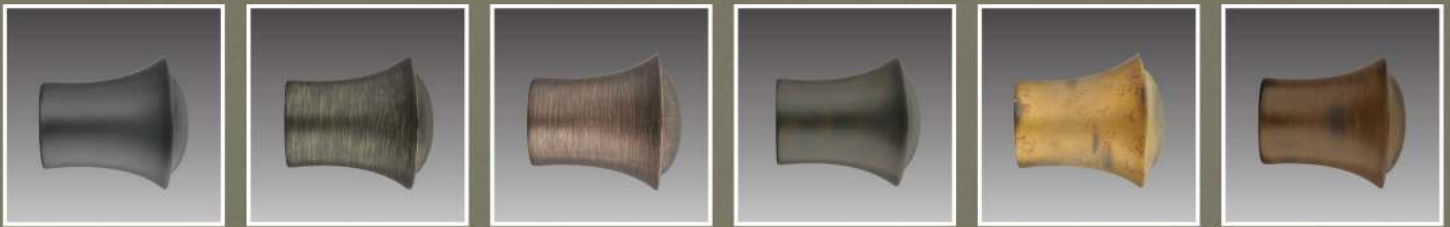
### Selkirk Finial

SH1401 / Finial size: 2" x 2<sup>1</sup>/<sub>16</sub>"



### Connaught Finial

SH1402 / Finial size: 2<sup>1</sup>/<sub>4</sub>" x 2"



### Laurel Finial

SH1403 / Finial size: 3<sup>1</sup>/<sub>2</sub>" x 2"



### Baillie Finial

SH1404 / Finial size: 2<sup>5</sup>/<sub>4</sub>" x 2<sup>1</sup>/<sub>16</sub>"



### Available in the following finishes



.59 Shadow Black

.64 Vintage Gold

.65 Vintage Copper

.67 Rusted Black

.68 Ancient Gold

.69 Nutmeg



SHAUGHNESSY COLLECTION



# Shaughnessy Collection

## FINIALS FOR 1" DIAMETER RODS

Dunbar Finial

SH1405 / Finial size: 1<sup>3</sup>/<sub>4</sub>" x 1<sup>1</sup>/<sub>4</sub>"



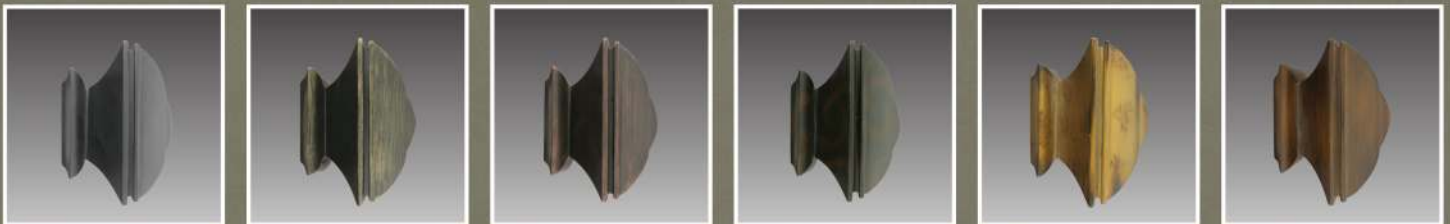
Marguerite Finial

SH1406 / Finial size: 3<sup>1</sup>/<sub>4</sub>" x 2<sup>5</sup>/<sub>8</sub>"



Trafalgar Finial

SH1407 / Finial size: 2" x 2<sup>1</sup>/<sub>2</sub>"



Cartier Finial

SH1408 / Finial size: 2<sup>5</sup>/<sub>4</sub>" x 2<sup>1</sup>/<sub>16</sub>"



1" End Cap

SH1400 / Finial size: 3<sup>3</sup>/<sub>4</sub>" x 1<sup>3</sup>/<sub>16</sub>"



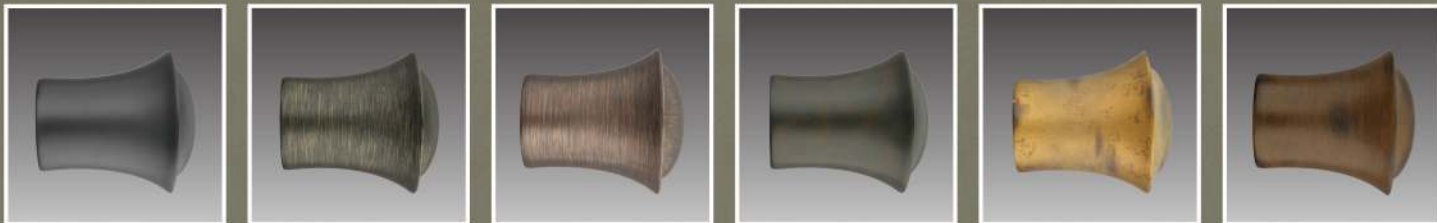


# Shaughnessy Collection

FINIALS FOR 1 1/2" DIAMETER RODS

Connaught Large Finial

SH3402 / Finial size: 3 1/4" x 3"



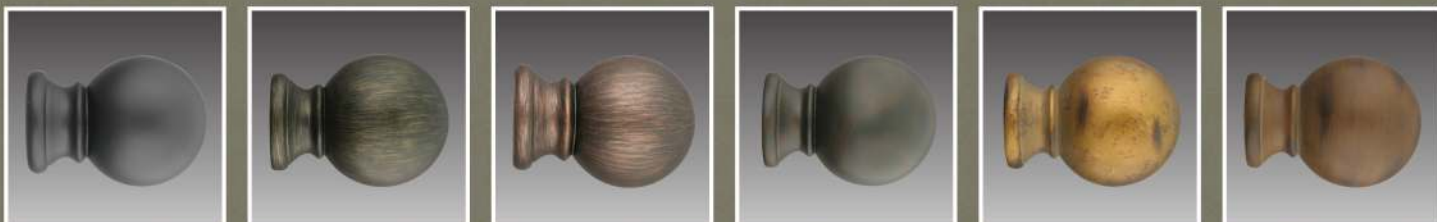
Laurel Large Finial

SH3403 / Finial size: 4 1/4" x 2 1/2"



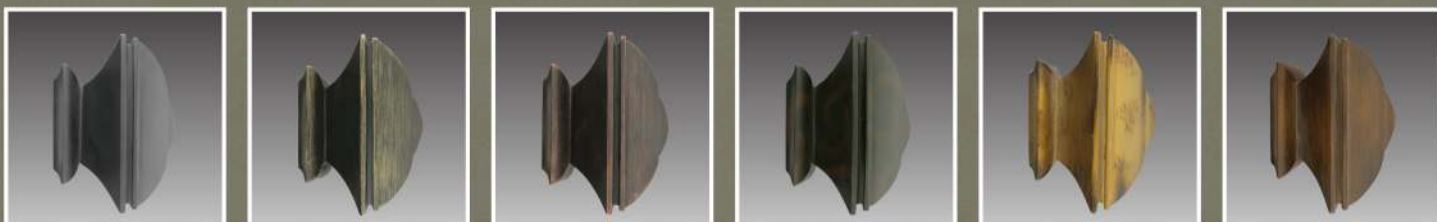
Baillie Large Finial

SH3404 / Finial size: 3 1/2" x 2 5/8"



Trafalgar Large Finial

SH3407 / Finial size: 3" x 3 3/4"



# Shaughnessy Collection

## FINIALS FOR 1 1/2" DIAMETER RODS

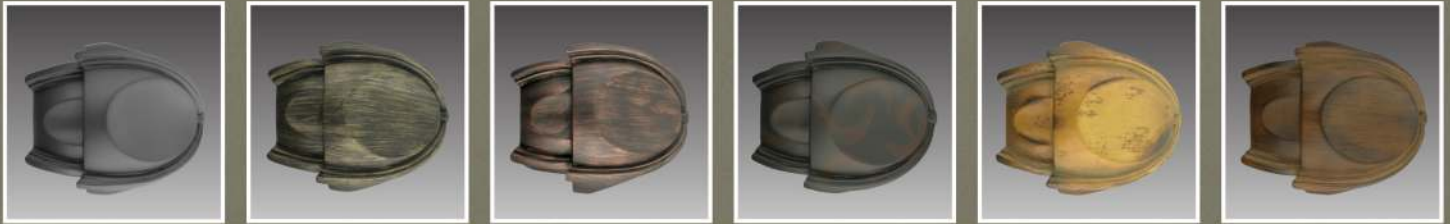
Wiltshire Finial

SH3409 / Finial size: 3 1/2" x 2 3/4"



Normandy Finial

SH3412 / Finial size: 3 1/2" x 3 1/8"



1 1/2" End Cap

SH3400 / Finial size: 1" x 1 1/16"









# Shaughnessy Collection

## ACCESSORIES



**Decorative Hook**  
Projection: 1"  
SH5510



**Magnolia Rosette**  
Size: 1<sup>3</sup>/<sub>4</sub>" Dia.  
SH5210



**Small Sphere Rosette**  
Size: 1<sup>1</sup>/<sub>2</sub>" Dia.  
SH5220



**Alexandra Rosette**  
Size: 1<sup>1</sup>/<sub>2</sub>"  
SH5230



**Large Sphere Rosette**  
Size: 1<sup>1</sup>/<sub>4</sub>" Dia.  
SH5240



**Beverly Tieback Rosette**  
Size: 3<sup>3</sup>/<sub>4</sub>" Dia.  
SH5010



**Avondale Tieback Rosette**  
Size: 3<sup>1</sup>/<sub>2</sub>" Dia.  
SH5020



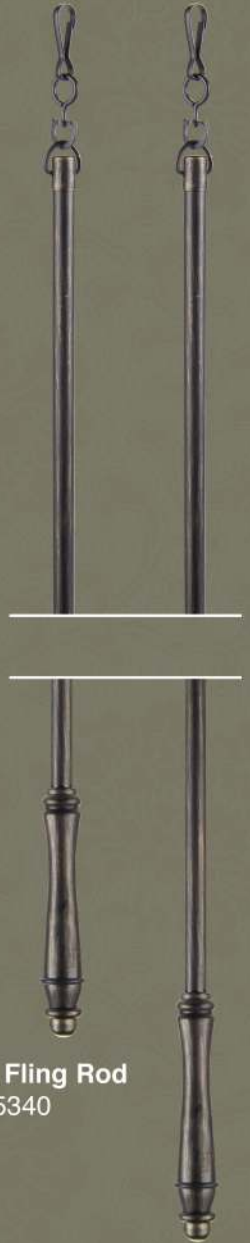
**Carnarvon Tieback Rosette**  
Size: 4"  
SH5030



**Alexandra Tieback Rosette**  
Size: 4"  
SH5040



**Adjustable Tieback/  
Rosette Post**  
Universal – use with rosette or tieback  
Max Total Length: 5"  
Base: 2<sup>1</sup>/<sub>8</sub>"  
SH5000



**40" Fling Rod**  
SH5340

**60" Fling Rod**  
SH5360



Available in the following finishes



.59 Shadow Black



.64 Vintage Gold



.65 Vintage Copper



.67 Rusted Black



.68 Ancient Gold



.69 Nutmeg



# Shaughnessy Collection

## BRACKETS FOR 1" DIAMETER RODS



**Adjustable Loop Bracket**  
 Projection: 2 1/2" - 3 1/2"  
 Total Length: 4 1/4"  
 Base Diameter: 2 1/8"  
 SH1203



**Adjustable Loop Bracket**  
 Projection: 2 1/2" - 6"  
 Total Length: 6 3/4"  
 Base Diameter: 2 1/8"  
 SH1206



**Adjustable Open Cup Bracket**  
 Projection: 2 1/2" - 6"  
 Total Length: 6 3/4"  
 Base Diameter: 2 1/8"  
 SH1216



**Heavy Duty Adjustable Bracket**  
 Projection: 4" - 5 1/2"  
 Base Height: 3 3/4"  
 SH1240



**Heavy Duty Adjustable Extension Bracket**  
 Projection: 6 1/2" - 8"  
 Base Height: 3 3/4"  
 SH1270



**Heavy Duty Adjustable Double Bracket**  
 Projection 1: 4" - 5 1/2"  
 Projection 2: 6 1/2" - 8"  
 Base Height: 3 3/4"  
 SH1280



**Inside Mount Bracket**  
 Base Diameter: 2 1/2"  
 SH1200

## 1" DIAMETER DECORATIVE RODS



**Decorative Metal Rod**  
 SH1048 - 4' Length  
 SH1096 - 8' Length  
 SH1120 - 10' Length



**Adjustable Corner Connector**  
 with plastic inserts  
 Size: 1 3/4" x 1 3/4"  
 SH1600



**Splice / Inner Fortification Rod**  
 SH1000 - 1' Splice  
 SH1008 - 8' Rod  
 SH1010 - 10' Rod

## RINGS FOR 1" DIAMETER RODS



**Round Ring with Hook & Nylon Liner**  
 Size: 1 5/8" I.D.  
 SH1300



**Flat Ring with Hook & Nylon Liner**  
 Size: 1 5/8" I.D.  
 SH1350



**Round Ring with Clip & Nylon Liner**  
 Size: 1 5/8" I.D.  
 SH1360





# Shaughnessy Collection

## BRACKETS FOR 1 1/2" DIAMETER RODS



**Adjustable Loop Bracket**  
Projection: 2 1/2" - 3 1/2"  
Total Length: 4 1/2"  
Base Diameter: 2 1/8"  
SH3203



**Adjustable Loop Bracket**  
Projection: 2 1/2" - 6"  
Total Length: 7"  
Base Diameter: 2 1/8"  
SH3206



**Adjustable Cup Bracket**  
Projection: 2 1/2" - 6"  
Total Length: 7"  
Base Diameter: 2 1/8"  
SH3216



**Heavy Duty Adjustable Bracket**  
Projection: 4 1/4" - 5 3/4"  
Base Height: 3 3/4"  
SH3240



**Heavy Duty Adjustable Extension Bracket**  
Projection: 6 3/4" - 8 1/4"  
Base Height: 3 3/4"  
SH3270



**Heavy Duty Adjustable Double Bracket**  
Projection 1: 4 1/4" - 5 3/4"  
Projection 2: 6 3/4" - 8 1/4"  
Base Height: 3 3/4"  
SH3280



**Inside Mount Bracket**  
Base Diameter: 3"  
SH3200

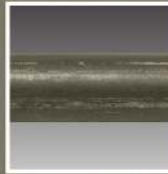
## 1 1/2" DIAMETER DECORATIVE RODS



**Decorative Metal Rod**  
SH3048 - 4' Length  
SH3096 - 8' Length  
SH3120 - 10' Length

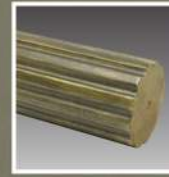


**Adjustable Corner Connector**  
Size: 2 1/2" x 2 1/2"  
SH3600



**Splice / Inner Fortification Rod**  
SH3000 - 1' Splice  
SH3008 - 8' Rod  
SH3010 - 10' Rod

## 1 1/2" DIAMETER HARDWOOD RODS & COMPONENTS



**Fluted Hardwood Rod**  
SH3706 - 6' Length  
SH3708 - 8' Length  
SH3712 - 12' Length



**Fluted Bracket**  
Projection: 3 1/2"  
Length: 5 1/2"  
Base Height: 5"  
SH3835



**Fluted Ring with Eyelet**  
I.D.: 2"  
SH3950

## RINGS FOR 1-1 1/2" DIAMETER RODS



**Round Ring with Hook & Nylon Liner**  
Size: 2" I.D.  
SH3300



**Flat Ring with Hook & Nylon Liner**  
Size: 2" I.D.  
SH3350



**Round Ring with Clip & Nylon Liner**  
Size: 2" I.D.  
SH3360

## BENDING / CURVING

Metal rods can be custom bent for bay and bow windows



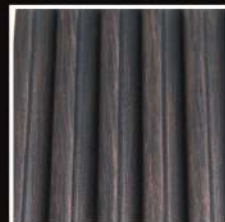
Available in the following finishes



.59 Shadow Black



.64 Vintage Gold



.65 Vintage Copper



.67 Rusted Black



.68 Ancient Gold



.69 Nutmeg





Textile Trimmings has served the interior design and window covering industry in North America for the past eighty years. We are a wholesale distributor of fine drapery hardware, track systems and workroom supplies with a significant supply of stock being maintained in our warehouse. In addition to our vast selection of drapery hardware, Textile Trimmings offers a full range of custom services thanks to our highly trained technical staff. Custom painting, bending, assembly and motorization are just a few of the custom services that we offer for our products.

At Textile Trimmings we have searched the world over so that we may offer an extensive selection of products in unparalleled quality. We take pride in not only offering superior products, but also in offering excellent customer service. Our knowledgeable customer service staff is available to offer project consultations and will work with you to solve all of your drapery dilemmas.

Always on the cutting edge, Textile Trimmings is your drapery hardware specialist.

## TEXTILE TRIMMINGS

1015 Clark Drive  
Vancouver, B.C., Canada V5L 3K1  
Tel: 604.251.2401 Fax: 604.251.2499

Toll Free: 1.800.663.0601  
Fax: 1.800.663.0634  
Email: [info@textiletrimmings.com](mailto:info@textiletrimmings.com)  
[www.textiletrimmings.com](http://www.textiletrimmings.com)