



**TEXTILE**  
**TRIMMINGS**  
*Your Drapery Hardware Specialist*

## Millennium Collection

- 50mm (2") Metal Round Rods
- 30mm (1¼") Metal & Clear Acrylic Round Rods
- 30mm (1¼") Round Channel Rods
- 20mm (¾") Metal Round Rods





**50mm (2")  
Millennium  
Collection**

**Finials for 50mm  
Diameter Rods**



**Mars Finial / ML4404**  
Size: 4 1/2" x 3"  
Finishes: .59 | .47 | .64 | .65 | .75



**Venus Finial / ML4406**  
Size: 4 1/4" x 3 3/4"  
Finishes: .59 | .47 | .64 | .65 | .75



**Neptune Finial / ML4407**  
Size: 2 1/2" x 3 1/4"  
Finishes: .59 | .47 | .64 | .65 | .75

**Brackets & Rings for  
50mm Diameter Rods**



**Loop Bracket / ML4206**  
Return: 6 1/2" (Can be cut down to custom size)  
Base Diameter: 2 3/4" Max Total Length: 7 1/2"  
Finishes: .59 | .47 | .64 | .65 | .75



**Inside Mount Bracket / ML4200**  
Base Diameter: 2 1/2"  
Finishes: .59 | .47 | .64 | .65 | .75



**Round Ring with Clip / ML4300**  
Inside Diameter: 2 3/8"  
Finishes: .59 | .47 | .64 | .65 | .75

**Millennium Collection  
Fling Rods**



**Fling Rod / ML1330**  
Length: 40"  
Finishes: .59 | .47 | .64 | .65 | .75  
For use with entire Millennium collection

**50mm Diameter Decorative Rods & Finishes**



**Decorative Rod / ML4117 / .59**  
Length: 118" (3.00 Meters)  
Pictured Finish: .59 Black



**Decorative Rod / ML4117 / .64**  
Length: 118" (3.00 Meters)  
Pictured Finish: .64 Vintage Gold



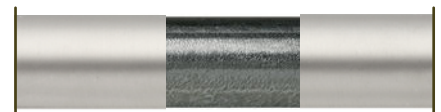
**Decorative Rod / ML4117 / .75**  
Length: 118" (3.00 Meters)  
Pictured Finish: .75 Brushed Nickel



**Decorative Rod / ML4117 / .47**  
Length: 118" (3.00 Meters)  
Pictured Finish: .47 Espresso



**Decorative Rod / ML4117 / .65**  
Length: 118" (3.00 Meters)  
Pictured Finish: .65 Vintage Copper



**Steel Splice / ML4000.61**  
Use to splice together 50mm diameter rods

# 30mm (1¼") Millennium Collection

.64 Vintage Gold  
ML1401

.82 Classic Brass  
ML1405

## Finials for 30mm (1¼") Diameter Rods



Saturn Finial / ML1401

Size: 2" x 2 1/2"

Finishes: .59 | .47 | .64 | .65 | .75 | .80 | .82 | .88 | .99



Pluto Finial / ML1405

Size: 2 1/2" x 1 1/4"

Finishes: .59 | .47 | .64 | .65 | .75 | .80 | .82 | .88 | .99



Mars Finial / ML1404

Size: 3 1/2" x 2 1/4"

Finishes: .59 | .47 | .64 | .65 | .75 | .80 | .82 | .88 | .99



Mercury Finial / ML1402

Size: 2 1/4" x 2"

Finishes: .59 | .47 | .64 | .65 | .75 | .80 | .82 | .88 | .99



Crystal Glass Finial / ML1408

Size: 2 5/8" x 2 3/4"

Finishes: .59 | .47 | .64 | .65 | .75 | .80 | .82 | .88 | .99



End Cap / ML1400

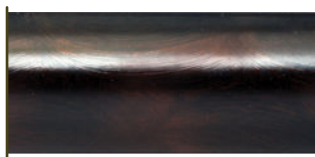
Size: 3/4" x 1 1/4"

Finishes: .59 | .47 | .64 | .65 | .75 | .80 | .82 | .88 | .99

## Available Finishes



.59 / Black



.47 / Espresso



.64 / Vintage Gold



.65 / Vintage Copper



.75 / Brushed Nickel



.82 / Classic Brass



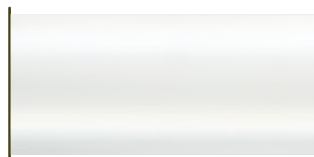
.88 / Brushed Stainless



.99 / Polished Chrome



.80 / Satin Gold



.98 / Clear Acrylic (Rods Only)

**30mm (1 1/4")  
Millennium  
Collection**

.99 Polished Chrome  
ML1408

.47 Espresso  
ML1404

**Brackets & Rings for  
30mm (1 1/4") Diameter Rods**



**Loop Bracket / ML1206**

**Return:** 5 1/4"  
**Base Diameter:** 2 1/8" **Total Length:** 6"  
*Can be cut down to custom size*  
**Finishes:** .59 | .47 | .64 | .65 | .75 | .80 | .82 | .88 | .99



**Double Bracket / ML1266**

**Return:** 3 3/4" | 6 1/4"  
**Base Diameter:** 2 1/8" **Total Length:** 7 1/8"  
*Can be cut down to custom size*  
**Finishes:** .59 | .47 | .64 | .65 | .75 | .80 | .82 | .88



**Decorative Flng Rod / ML1330**

**Length:** 40"  
**Finishes:** .59 | .47 | .64 | .65 | .75 | .80 | .82 | .88 | .99



**Open Cup Bracket / ML1216**

**Return:** 5 1/4"  
**Base Diameter:** 2 1/8" **Total Length:** 6"  
*Can be cut down to custom size*  
**Finishes:** .59 | .47 | .64 | .65 | .75 | .80 | .82 | .88 | .99



**Inside Mount Bracket / ML1200**

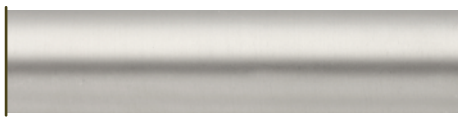
**Base Diameter:** 1 1/2"  
**Finishes:** .59 | .47 | .64 | .65 | .75 | .80 | .82 | .88 | .99



**Flat Ring with Clip / ML1350**

**Inside Diameter:** 1 5/8"  
**Feature:** Nylon Liner for Smooth Draw  
**Finishes:** .59 | .47 | .64 | .65 | .75 | .80 | .82 | .88 | .99

**30mm (1 1/4") Diameter Decorative Metal Rods**



**30mm Decorative Rod - 10 Ft / ML1117**

**Length:** 120" (3.04 Meters)  
**Finishes:** .59 | .47 | .64 | .65 | .75 | .80 | .82 | .88 | .99



**30mm Decorative Rod - 8 Ft / ML1096**

**Length:** 96" (2.43 Meters)  
**Finishes:** .59 | .47 | .64 | .65 | .75 | .80 | .82 | .88 | .99



**30mm Decorative Rod - 5 Ft / ML1058**

**Length:** 60" (1.52 Meters)  
**Finishes:** .59 | .47 | .64 | .65 | .75 | .80 | .82 | .88 | .99



**Adjustable Corner Connector / ML1600**

*Use to connect 30mm diameter rods*  
**Finishes:** .59 | .47 | .64 | .65 | .75 | .80 | .82 | .88 | .99

**30mm (1 1/4") Diameter Clear Acrylic Rods**



**Finish:** .98 - Clear Acrylic

**30mm Decorative Rod - 8Ft / LCT1008.98**

**Length:** 96" (2.43 Meters)

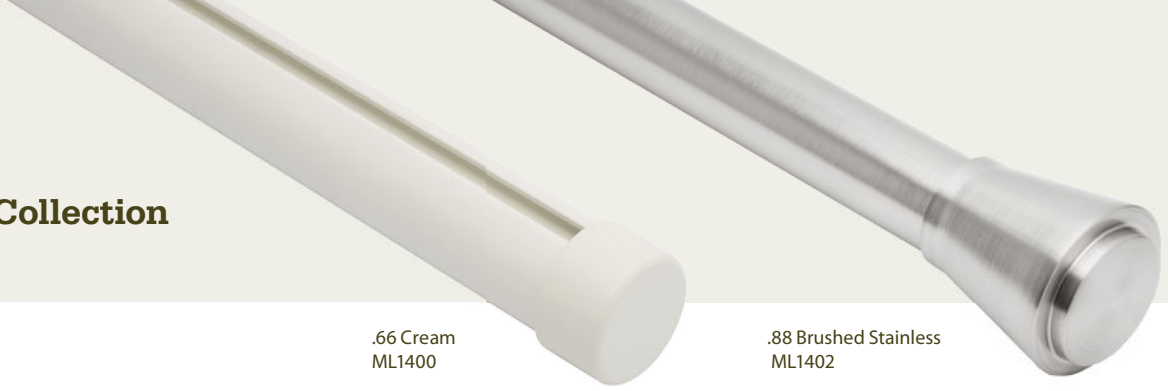
**30mm Decorative Rod - 6Ft / LCT1006.98**

**Length:** 72" (1.82 Meters)



**Millennium Collection Sample Case**

**30mm (1¼")  
Millennium  
Channel Rod Collection**



.66 Cream  
ML1400

.88 Brushed Stainless  
ML1402

**Finials for  
30mm (1¼") Channel Rods**



**Saturn Finial / ML1401**

Size: 2" x 2 1/2"

Finishes: .47 | .50 | .59 | .62 | .64 | .65  
.66 | .71 | .80 | .84 | .88



**Mars Finial / ML1404**

Size: 3 1/2" x 2 1/4"

Finishes: .47 | .50 | .59 | .62 | .64 | .65  
.66 | .71 | .80 | .84 | .88



**Crystal Glass Finial / ML1408**

Size: 2 5/8" x 2 3/4"

Finishes: .47 | .50 | .59 | .62 | .64 | .65  
.66 | .71 | .80 | .84 | .88 | .90



**Mercury Finial / ML1402**

Size: 2 1/4" x 2"

Finishes: .47 | .50 | .59 | .62 | .64 | .65  
.66 | .71 | .80 | .84 | .88



**Pluto Finial / ML1405**

Size: 2 1/2" x 1 1/4"

Finishes: .47 | .50 | .59 | .62 | .64 | .65  
.66 | .71 | .80 | .84 | .88 | .90

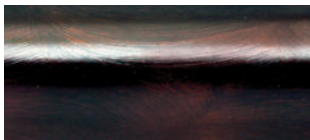


**End Cap / ML1400**

Size: 3/4" x 1 1/4"

Finishes: .47 | .50 | .59 | .62 | .64 | .65  
.66 | .71 | .80 | .84 | .88 | .90

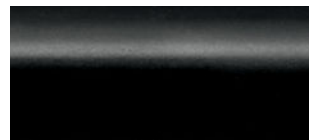
**Available Finishes**



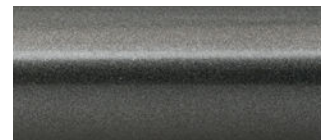
.47 Espresso



.50 Silver Cloud



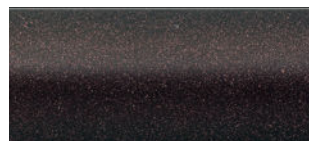
.59 Black



.62 Gun Metal



.64 Vintage Gold



.65 Vintage Copper



.66 Cream



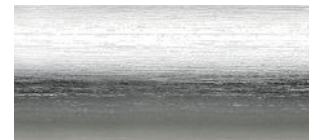
.71 Cloud White



.80 Satin Gold



.84 Gold



.88 Brushed Stainless



.90 Mirror Chrome

# 30mm (1¼") Millennium Channel Rod Collection

.62 Gun Metal  
ML1408

.65 Vintage Copper  
ML1405

## Brackets for 30mm (1¼") Channel Rods



### Decorative Wall Bracket / ML7310

**Return:** 3 1/4"  
**Base Diameter:** 1 7/8"  
**Finishes:** .47 | .50 | .59 | .62 | .64 | .65  
.66 | .71 | .80 | .84 | .88 | .90



### Bracket Extension / ML7315

**Length:** 1"  
*Use to extend decorative wall bracket projection*  
**Finishes:** .47 | .50 | .59 | .62 | .64 | .65  
.66 | .71 | .80 | .84 | .88



### Economy Wall Bracket / ML7300

**Return:** 3 1/2"  
**Base Height:** 2"  
**Finishes:** .47 | .50 | .59 | .62 | .64 | .65  
.66 | .71 | .80 | .84 | .88 | .90



### Custom Suspension Ceiling Bracket / HT3050

**Standard Length:** 39"  
*Can be made to custom length*  
**Finishes:** .25 White | .59 Black  
*Custom painting available*



### Decorative Double Bracket / ML7410

**Returns:** 3 1/2" | 7 1/2"  
**Base Diameter:** 2 1/2"  
**Finishes:** .47 | .50 | .59 | .62 | .64 | .65  
.66 | .71 | .80 | .84 | .88 | .90



### Ceiling Bracket / ML7215

**Clearance:** 1 5/8"  
**Base Diameter:** 1 7/8"  
**Finishes:** .47 | .50 | .59 | .62 | .64 | .65  
.66 | .71 | .80 | .84 | .88



### Ceiling Bracket Clip / ML7250

**Total Length:**  
**Finishes:** .47 | .50 | .59 | .62 | .64 | .65  
.66 | .71 | .80 | .84 | .88 | .90



### Extended Double Bracket / ML7440

*Use for Snap-On applications*  
**Returns:** 3 1/8" | 8 5/8"  
**Base Height:** 2 1/2"  
**Finishes:** .47 | .50 | .59 | .62 | .64 | .65  
.66 | .71 | .80 | .84 | .88 | .90



### Adjustable Wall Bracket / ML7350

**Adjustable Return:** 2 1/2" - 3 3/4"  
**Base Height:** 2"  
**Finishes:** .47 | .50 | .59 | .62 | .64 | .65 | .66 | .71 | .84



### Inside Mount Bracket / ML1200

**Base Diameter:** 1 1/2"  
**Finishes:** .47 | .50 | .59 | .62 | .64 | .65  
.66 | .71 | .80 | .84 | .88 | .90



### Adjustable Angle Extension / ML7220

*Use with ML7215 bracket for installations on inclined ceiling*  
**Finishes:** .47 | .50 | .59 | .62 | .64 | .65  
.66 | .71 | .80 | .84 | .88



### Economy Double Bracket / ML7400

**Returns:** 3 1/2" | 7 5/8"  
**Base Height:** 2 1/2"  
**Finishes:** .47 | .50 | .59 | .62 | .64 | .65  
.66 | .71 | .84 | .88 |



### Economy Double Bracket with CS Clip / ML7470

**Returns:** 3 3/8" | 7 5/8"  
**Base Height:** 2 1/2"  
**Finishes:** .47 | .50 | .59 | .62 | .64 | .65  
.66 | .71 | .84 | .88 | .90



### CS Track / CS1600

**Length:** 16Ft | 19Ft  
*Use with ML7470 for second treatment*  
**Finishes:** .59 Black | .25 White | .01 Brown | .60 Aluminum

# 30mm (1¼") Millennium Channel Rod Collection

## 30mm (1¼") Diameter Channel Rods



6 Foot Length (72") / ML7006  
8 Foot Length (96") / ML7008  
10 Foot Length (120") / ML7010  
12 Foot Length (144") / ML7012

14 Foot Length (168") / ML7014  
16 Foot Length (192") / ML7016  
19.2 Foot Length (230") / ML7019

Finishes: .47 | .50 | .59 | .62 | .64 | .65  
.66 | .71 | .80 | .84 | .88 | .90

*Rods can be bent to custom specifications. Minimum radius for angle bend = 12"*



Adjustable Corner Connector / ML1600

*Use to connect 30mm channel rods*

Finishes: .47 | .50 | .59 | .62 | .64 | .65  
.66 | .71 | .80 | .84 | .88



Splice Cover / ML7100

*Use to cover seam between spliced rods*

Finishes: .47 | .50 | .59 | .62 | .64 | .65  
.66 | .71 | .80 | .84 | .88



Splice / ML7000

*Use to connect 30mm channel rods*



Corner Splice / IC5000





# 30mm (1¼") Millennium Channel Rod Collection

## Components for Snap-On

### Snap-On Wheeled Carrier



**3 1/8" on Center / ACS2804N**  
Wheeled / Double Sided  
*For 40% fullness when using 4 1/4" snap tape*  
**Finishes:** .25 (White) | .59 (Black)

**2 5/8" on Center / ACS2806N**  
Wheeled / Double Sided  
*For 60% fullness when using 4 1/4" snap tape*  
**Finishes:** .25 (White) | .59 (Black)

**2 3/8" on Center / ACS2808N**  
Wheeled / Double Sided  
*For 80% fullness when using 4 1/4" snap tape*  
**Finishes:** .25 (White) | .59 (Black)

**2 1/8" on Center / ACS2810N**  
Wheeled / Double Sided  
*For 100% fullness when using 4 1/4" snap tape*  
**Finishes:** .25 (White) | .59 (Black)

**1 7/8" on Center / ACS2812N**  
Wheeled / Double Sided  
*For 120% fullness when using 4 1/4" snap tape*  
**Finishes:** .25 (White) | .59 (Black)

### Snap-On Tape



**Snap: 4 1/4" on Center / ACS2945**  
**Finishes:** .25 (White) | .59 (Black) | .98 (Clear)

**Snap: 6" on Center / ACS2960**  
**Finishes:** .25 (White) | .98 (Clear)

**Snap: 7 1/2" on Center / ACS2975**  
**Finish:** .25 (White)

**Snap: 8 1/2" on Center / ACS2985**  
**Finish:** .25 (White)

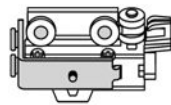
**Snap: 10" on Center / ACS2910**  
**Finish:** .25 (White)



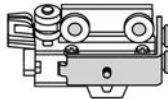
**Snap-On Master Carrier  
Overlap / ACS2035**  
**Finishes:** .25 (White) | .59 (Black)



**Snap-On Master Carrier  
Underlap / ACS2036**  
**Finishes:** .25 (White) | .59 (Black)



**Snap-On Butt Master Carrier  
Right Hand / ACS2045**  
**Finishes:** .25 (White) | .59 (Black)



**Snap-On Butt Master Carrier  
Left Hand / ACS2046**  
**Finishes:** .25 (White) | .59 (Black)



**Metal End Stop / HW912**  
*Universal - for use with Snap-On and Pinch Pleat*

## Components for Pinch Pleat



**Slim Ball Bearing Carrier / ACS2250**  
**Width:** 5/8" (16mm)  
3/4" Pin drop  
**Finishes:** .25 (White) | .01 (Brown)  
.59 (Black) | .60 (Aluminum)



**Mini Ball Bearing Carrier / ACS2245**  
**Width:** 1/2" (12mm)  
*For use when smaller stackback is required*  
3/4" Pin drop  
**Finishes:** .25 (White) | .59 (Black)



**Master Carrier Overlap / ACS2013**  
Reversible  
**Finishes:** .25 (White) | .59 (Black)



**Master Carrier Underlap / ACS2014**  
Reversible  
**Finishes:** .25 (White) | .59 (Black)



**2 Way Universal End Stop / HW910**  
**Finishes:** .25 (White) | .61 (Nickel Plated)

## 20mm (3/4") Millennium Collection

.82 Classic Brass  
ML2404

.47 Espresso  
ML2402

### Finials for 20mm Diameter Rods



#### Saturn Finial / ML2401

Size: 1 1/4" x 1 1/2"  
Finishes: .59 | .47 | .64 | .65 | .75 | .82



#### Mercury Finial / ML2402

Size: 1 1/2" x 1 1/4"  
Finishes: .59 | .47 | .64 | .65 | .75 | .82



#### Mars Finial / ML2404

Size: 2 3/4" x 1 3/4"  
Finishes: .59 | .47 | .64 | .65 | .75 | .82



#### Pluto Finial / ML2405

Size: 2" x 1"  
Finishes: .59 | .47 | .64 | .65 | .75 | .82



#### End Cap / ML2400

Size: 5/8" x 1"  
Finishes: .59 | .47 | .64 | .65 | .75 | .82

### Brackets & Rings for 20mm Diameter Rods



#### Loop Bracket / ML2206

Return: 5 1/2"  
Base Diameter: 2 1/8" Max Total Length: 4"  
*Can be cut down to custom size*  
Finishes: .59 | .47 | .64 | .65 | .75 | .82



#### Double Bracket / ML2266

Return: 3 1/4" - 5 1/2"  
Base Diameter: 2 1/8" Max Total Length: 6"  
*Can be cut down to custom size*  
Finishes: .59 | .47 | .64 | .65 | .75 | .82



#### Inside Mount Bracket / ML2200

Base Diameter: 1 1/8"  
Finishes: .59 | .47 | .64 | .65 | .75 | .82



#### Flat Ring with Clip / ML2350

Inside Diameter: 1 1/8"  
10 /pkg  
Feature: Nylon Liner for Smooth Draw  
Finishes: .59 | .47 | .64 | .65 | .75 | .82

### 20mm Diameter Decorative Rods



#### 20mm Decorative Rod - 59" / ML2058

Length: 59" (1.50 Meters)  
Finishes: .59 | .47 | .64 | .65 | .75 | .82



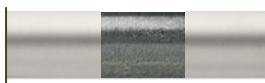
#### 20mm Decorative Rod - 98" / ML2096

Length: 98" (2.50 Meters)  
Finishes: .59 | .47 | .64 | .65 | .75 | .82



#### 20mm Decorative Rod - 118" / ML2117

Length: 118" (3.00 Meters)  
Finishes: .59 | .47 | .64 | .65 | .75 | .82



#### Steel Splice / ML2000.61

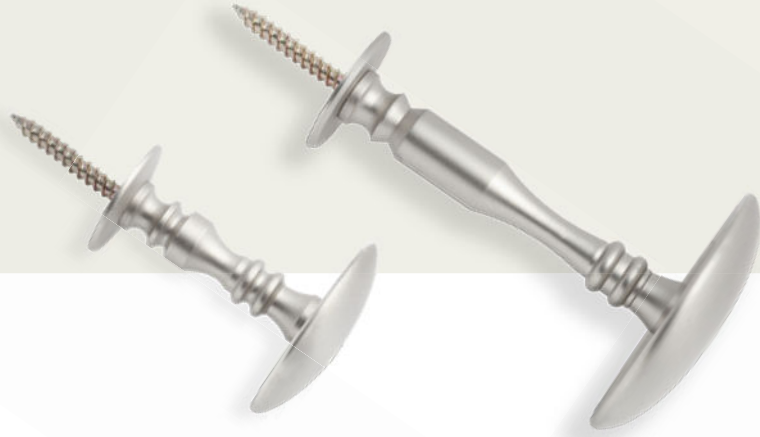
Use to splice together 20mm Diameter rods



#### Adjustable Corner Connector / ML2600

Size: 1 7/8" x 1 7/8"  
Use to connect 20mm diameter rods  
Finishes: .59 | .47 | .64 | .65 | .75 | .82

**Millennium  
Collection  
Accessories**



**Millennium Collection  
Accessories**



**Large Holdback Medallion / ML1622**

**Medallion Diameter:** 2 1/2"  
*Use with ML1612 or ML1614*  
**Available Finishes:** .59 | .47 | .64 | .65 | .75 | .82 | .88



**4" Holdback Stem / ML1614**

**Base Diameter:** 1 1/8"  
*Use with ML1621 or ML1622*  
**Available Finishes:** .59 | .47 | .64 | .65 | .75 | .82 | .88



**Tassel Hook / ML1510**

**Return:** 1 5/8" **Base Diameter:** 1"  
**Available Finishes:** .59 | .47 | .64 | .65 | .75 | .82 | .88



**Small Holdback Medallion / ML1621**

**Medallion Diameter:** 1 3/4"  
*Use with ML1612 or ML1614*  
**Available Finishes:** .59 | .47 | .64 | .65 | .75 | .82 | .88



**2 3/8" Holdback Stem / ML1612**

**Base Diameter:** 1 1/8"  
*Use with ML1621 or ML1622*  
**Available Finishes:** .59 | .47 | .64 | .65 | .75 | .82 | .88



**Decorative Fling Rod / ML1330**

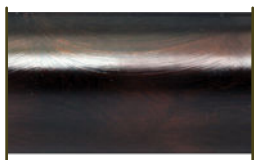
**Length:** 40"  
**Available Finishes:** .59 | .47 | .64 | .65 | .75 | .82 | .88

**20mm (3/4") Millennium Collection**

**Available Finishes**



**.59 / Black**



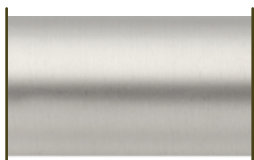
**.47 / Espresso**



**.64 / Vintage Gold**



**.65 / Vintage Copper**



**.75 / Brushed Nickel**



**.82 / Classic Brass**



**Swing Arm With End Cap / ML5000**

**Length:** 39" **Rod Diameter:** 5/8"  
**Bracket Size:** 1 5/8" x 3 1/8"  
**Finish:** .99 Polished Chrome



**Swing Arm with Ball Finial / ML5004**

**Length:** 39" **Rod Diameter:** 5/8"  
**Bracket Size:** 1 5/8" x 3 1/8"  
**Ball Finial Size:** 2 3/8" x 1 5/8"  
**Finish:** .99 Polished Chrome

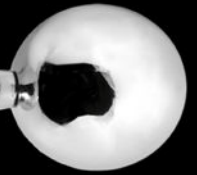


**Flat Ring with Eyelet / ML2350**

**Inside Diameter:** 1 1/16" (27mm)  
*Nylon Liner for Smooth Draw*  
**Finish:** .99 Polished Chrome



Swing Arm with Ball Finial / ML5004  
Finish: .99 Polished Chrome



Swing Arm With End Cap / ML5000  
Finish: .99 Polished Chrome



# TEXTILE TRIMMINGS

*Your Drapery Hardware Specialist*

13040 Worster Court , Richmond, B.C., CANADA V6V 2B3

Phone: (604) 821-1188 / Toll free: 1-888-982-0888

Fax: (604) 821-1199 / Toll free: 1-888-983-0888

[info@textiletrimmings.com](mailto:info@textiletrimmings.com)

[www.textiletrimmings.com](http://www.textiletrimmings.com)

